

COUPE TRANSVERSALE

- 1 TOITURE & PLAFOND**
 BARDEAUX D'ASPHALTE 20 ANS
 PAPIER NOIR 50 LBS EN BORDURE
 CONTREPLAQUÉ 1/2" + AGRAFES "H"
 FERMES PRÉFABRIQUÉES @ 24" CC
 ISOLANT EN MATTE R-35
 CARTON-FIBRE NATUREL 7/16"
 PARE-VAPEUR, JOINTS SCELLÉS
 FOURRURES 1 X 4 @ 16" CC
 GYPSE 1/2" VISSÉ

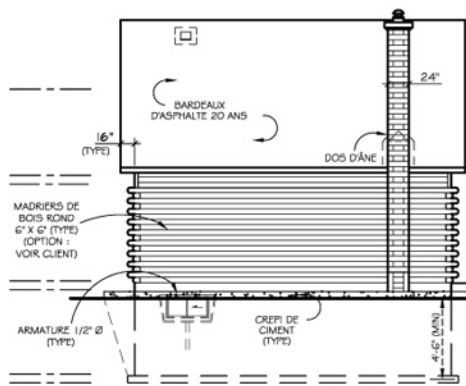
- 3 FONDATION**
 A+B BÉTON 8" OU 10" ÉPAISSEUR, 20 MPA
 SUR SEMELLE (VOIR PLAN)
 EXT. HORS-SOL : CIMENT FINI
 SOUS-SOL : HYDROFUGE
 A INT. PAPIER NOIR 15 LBS
 2 X 4 @ 24" CC
 ISOLANT EN MATTE R-12
 PARE-VAPEUR, JOINTS SCELLÉS
 GYPSE 1/2" VISSÉ
 B INT. ISOLANT RIG. 2" X 2'-0" (R-10) PÉRIM. EXT.

- 6 CLOISONS INTÉRIEURES**
 GYPSE 1/2" VISSÉ
 2 X 4 @ 16" CC
 2 X 4 @ 12" CC SI PORTEUR
 2 X 6 @ 16" CC SI FLOMBERIE
 GYPSE 1/2" VISSÉ

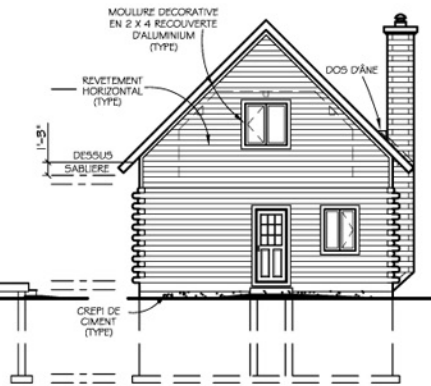
- 2 MUR EXTERIEUR**
 A REVÊTEMENT EXTÉRIEUR
 TREILLIS MÉTALL. SI AGRÉGATS
 FOURRURES 1 X 3 @ 16" CC
 B BRIGUE OU PIERRE
 ESPACE D'AIR 1"
 A+B PARE-AIR OU PAPIER NOIR 15 LBS
 CARTON-FIBRE GOUDRONNÉ 7/16"
 COLOMBAGES 2 X 6 @ 16" CC
 ISOLANT EN MATTE R-20
 CARTON-FIBRE NATUREL 7/16"
 PARE-VAPEUR, JOINTS SCELLÉS
 FOURRURES 1 X 3 @ 16" CC
 GYPSE 1/2" VISSÉ

- 4 PLANCHER**
 FINITION
 CONTREPLAQUÉ 3/8" SOUS REV. SOUPLE
 CONTREPLAQUÉ 5/8" SELECT EPT. EMB.
 POUTRELLES DE PLANCHER (VOIR FAB.)
 PLANCHE ANTITORSION 2 X 6 CONTINUE
 A FOURRURES 1 X 4 @ 16" CC
 GYPSE 1/2" VISSÉ

- 5 PLANCHER (DALLE SUR SOL)**
 FINITION
 DALLE DE BÉTON 4", 25 MPA
 POLYÉTHYLÈNE .006
 PIERRE CONCASSÉE 0-3/4", 6" ÉPAISSEUR MIN.



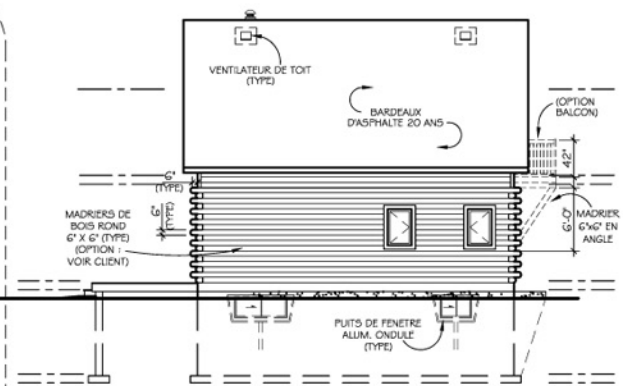
ELEVATION GAUCHE
ECH. 1/8" = 1'-0"



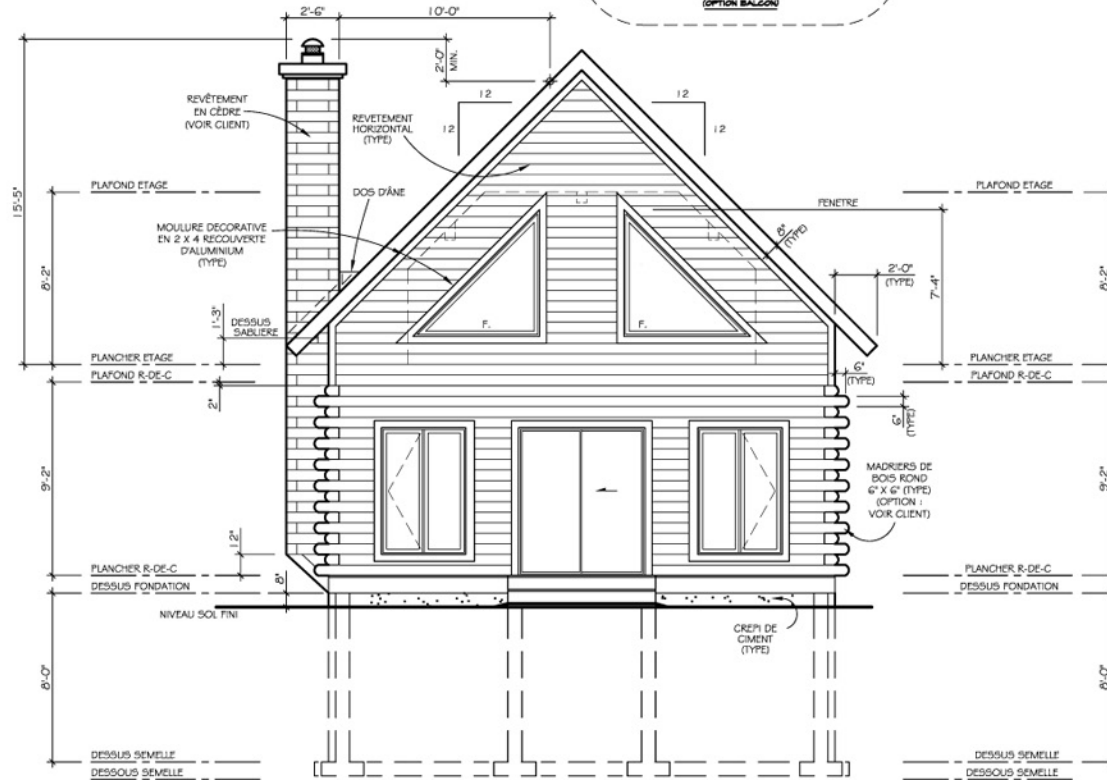
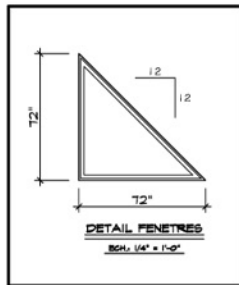
ELEVATION ARRIERE
ECH. 1/8" = 1'-0"



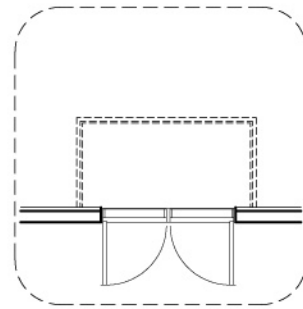
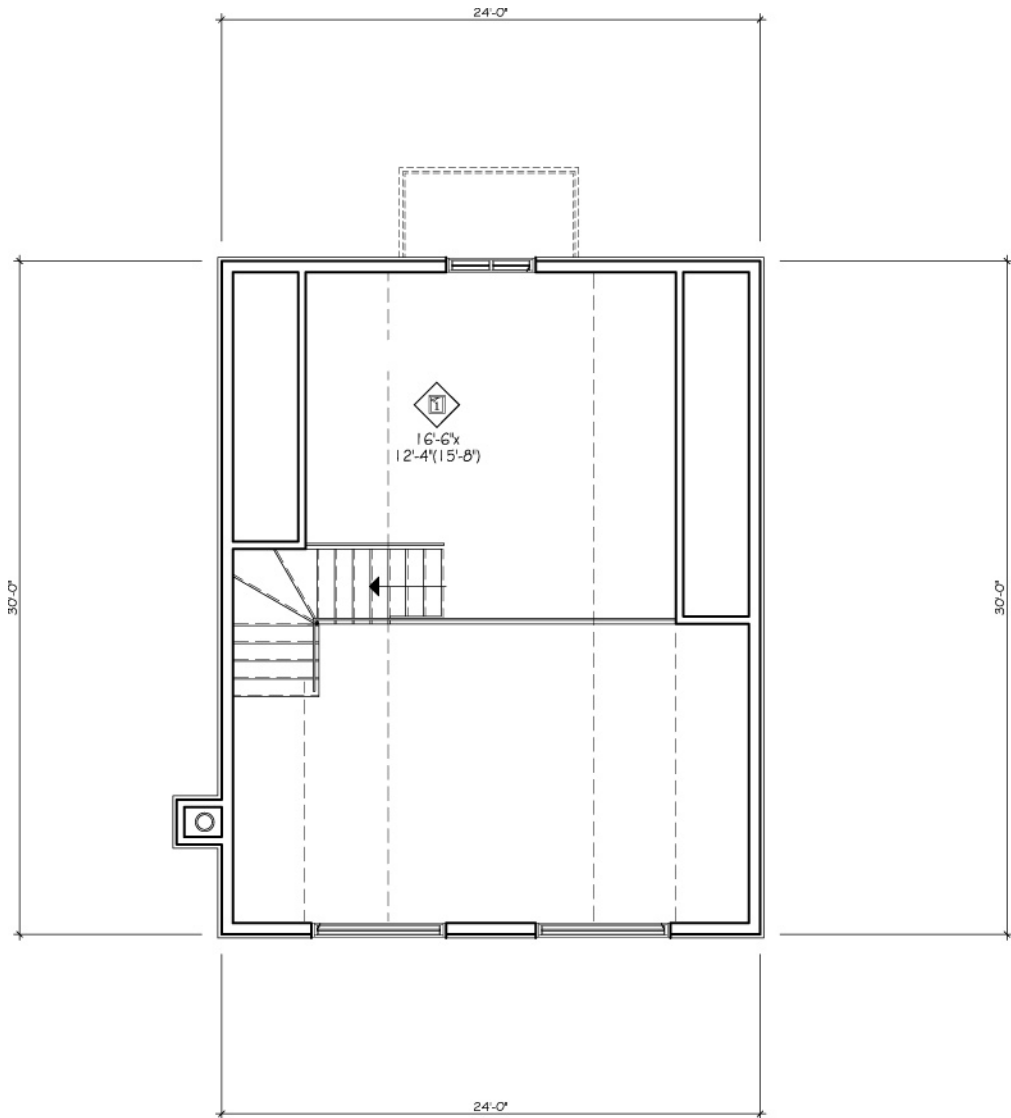
ELEVATION ARRIERE
ECH. 1/8" = 1'-0"
(OPTION BALCON)

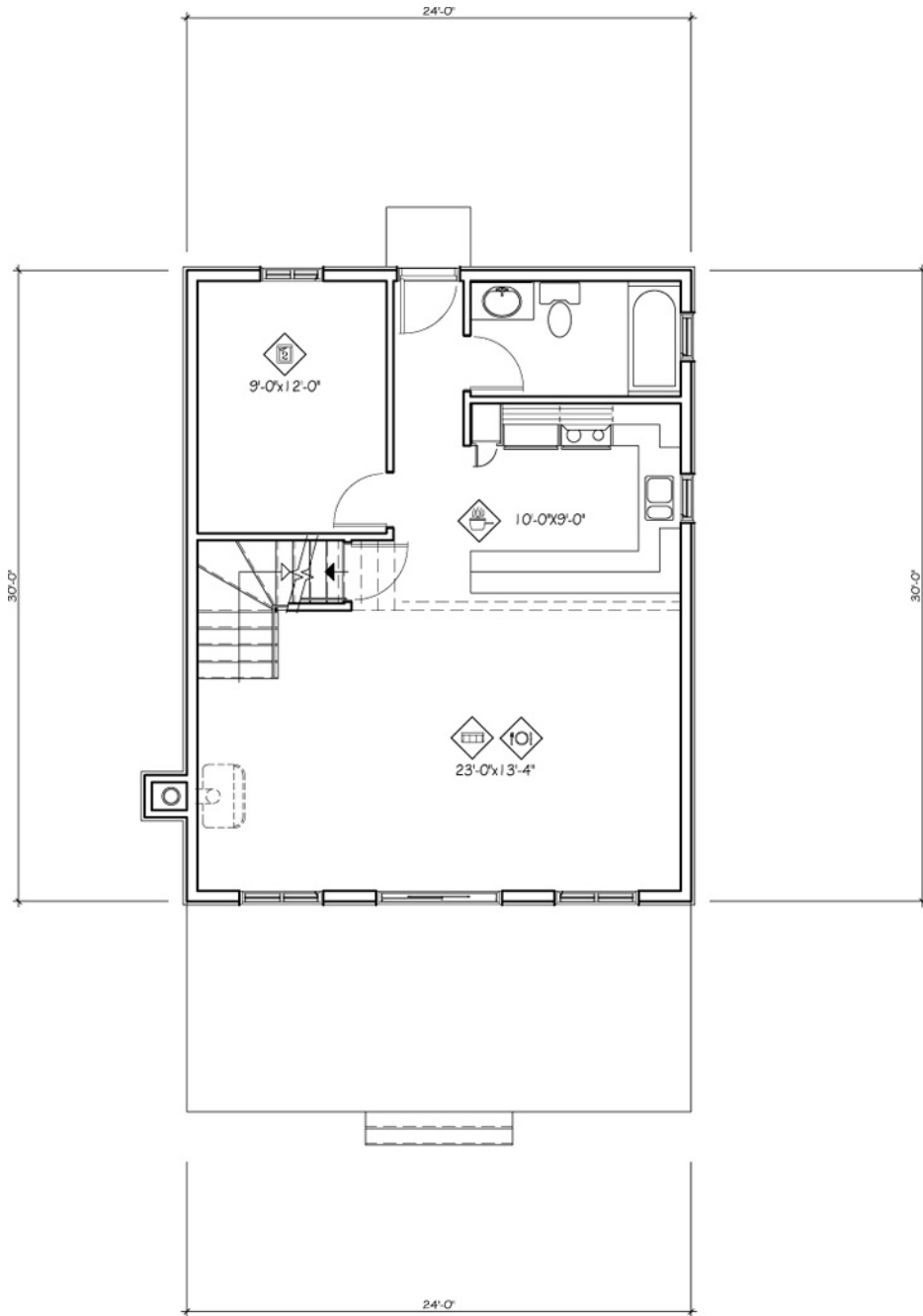


ELEVATION DROITE
ECH. 1/8" = 1'-0"

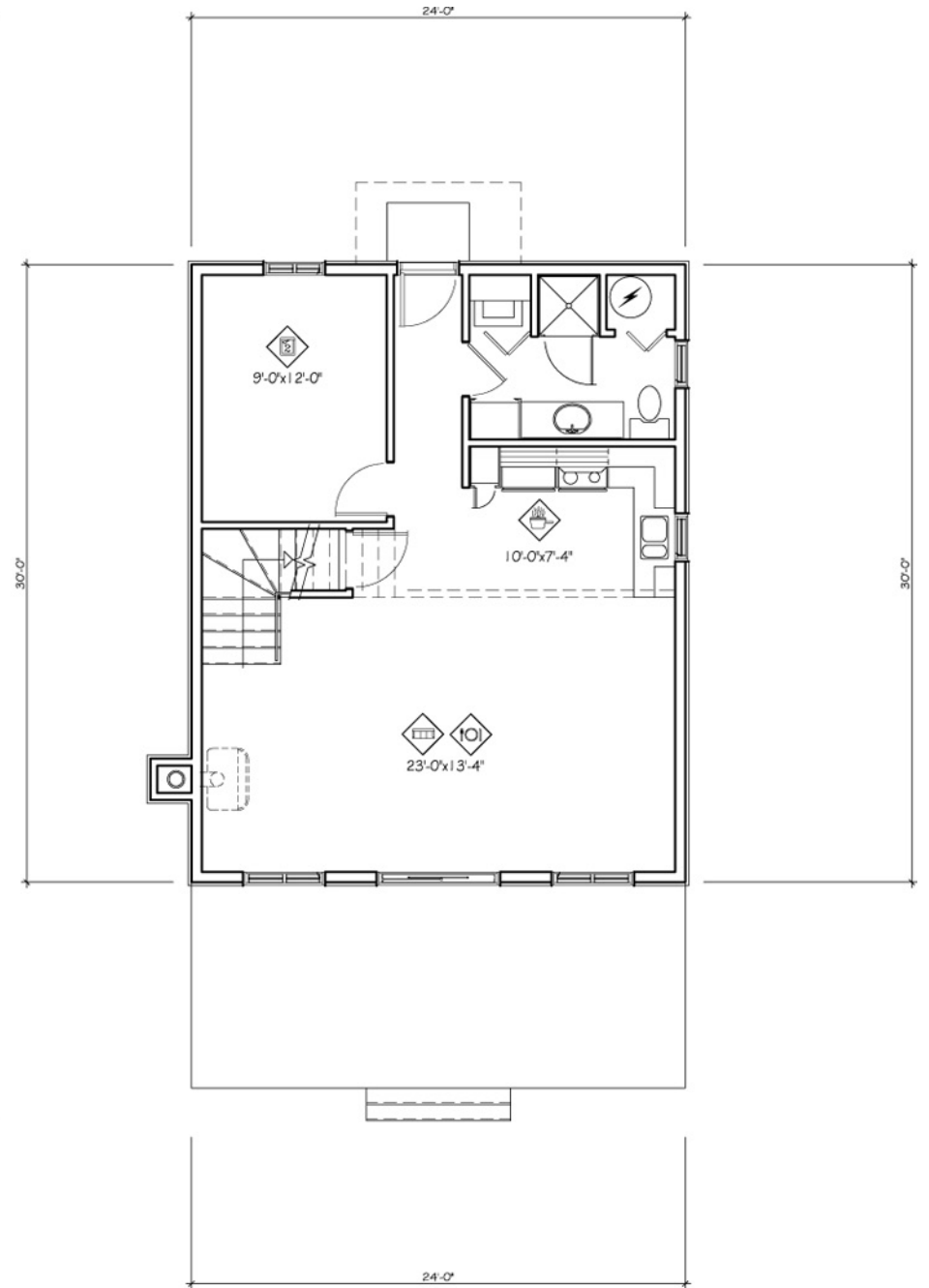


ELEVATION AVANT
ECH. 1/4" = 1'-0"





REZ-DE-CHAUSSÉE
(AVEC SOUS-SOL)

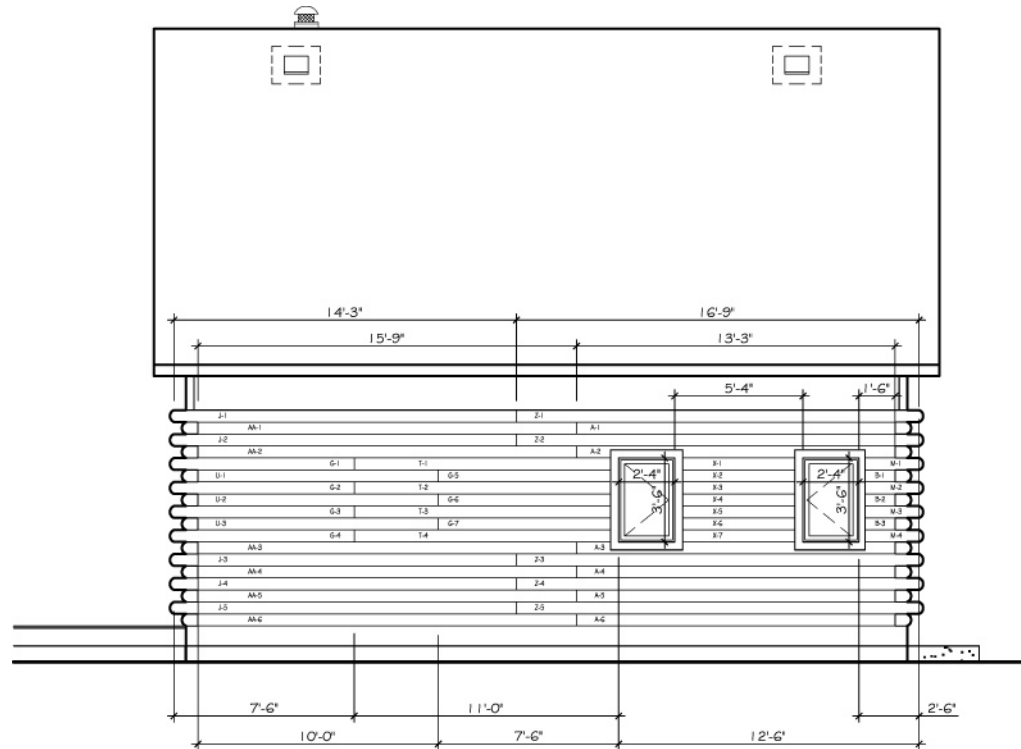


REZ-DE-CHAUSSÉE
(DALE SUR SOL)



ELEVATION ARRIERE

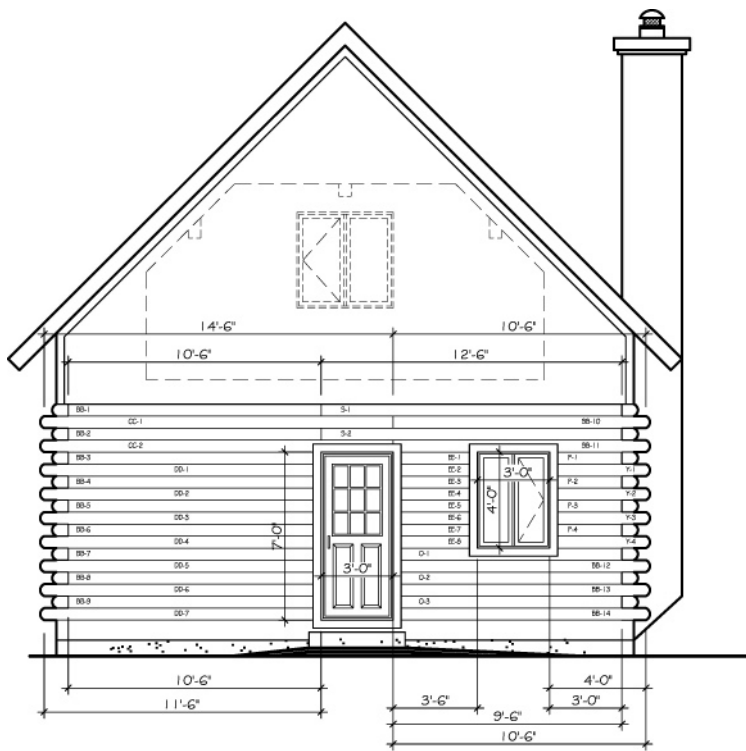
24' X 30'



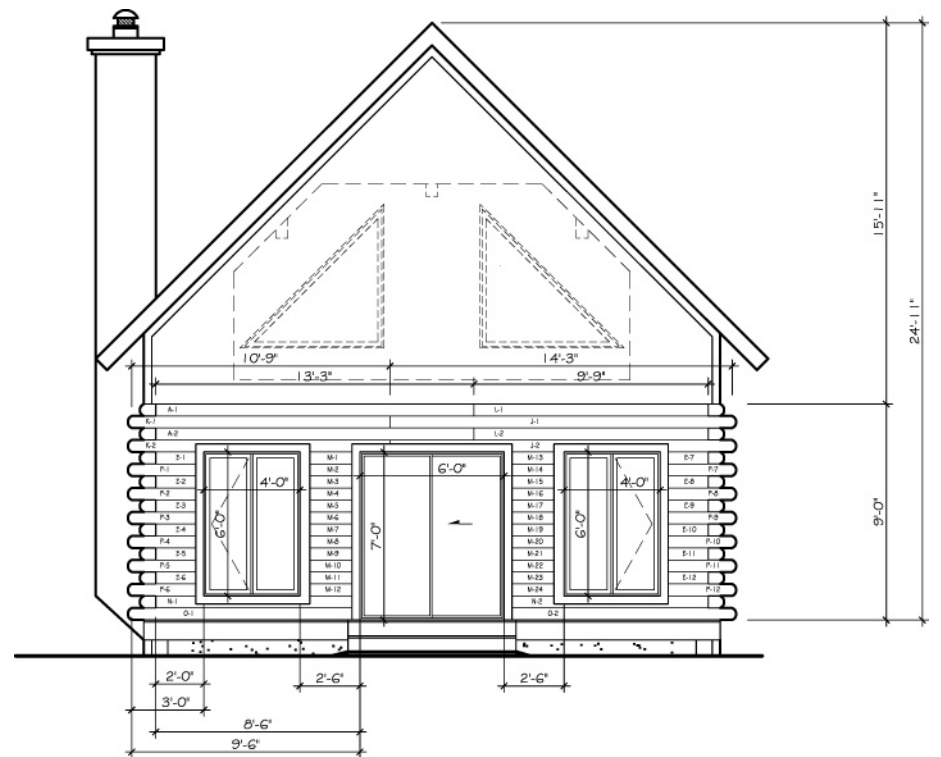
ELEVATION DROITE

24' X 30'

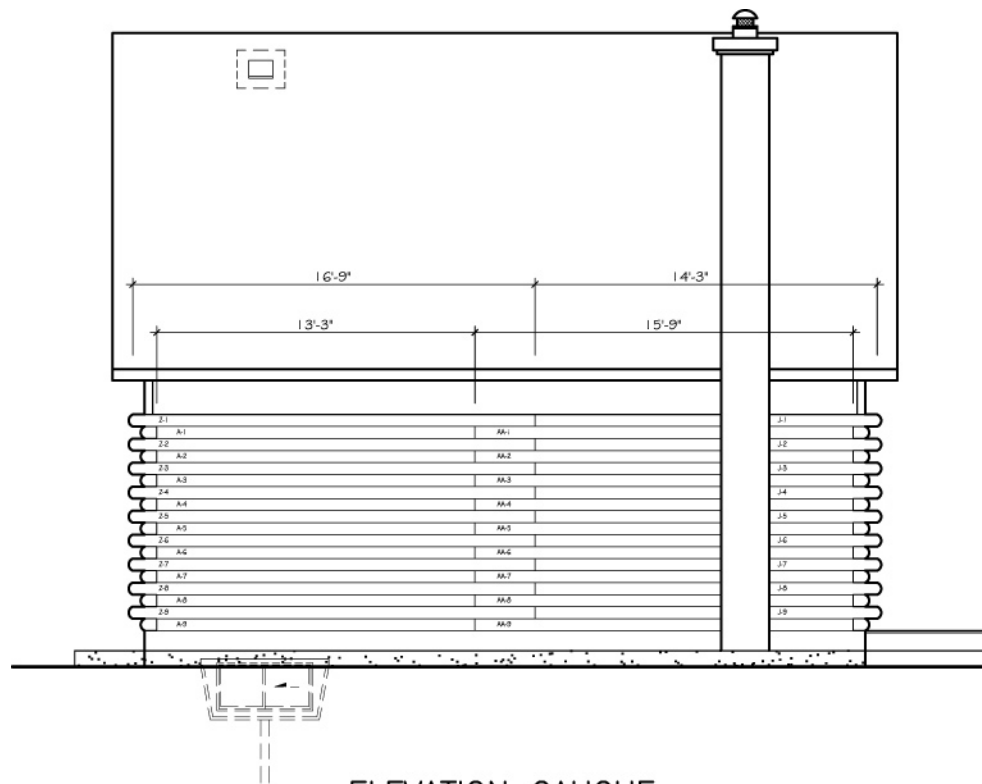
FONDATION STD



ELEVATION ARRIERE
24' X 30'



ELEVATION AVANT
24' X 30'



ELEVATION GAUCHE
24' X 30'